

SPECIFICATIONS

Satellite Signals Tracked Simultaneously	
Signal tracking	220 channels
	BDS B1,B2,B3
	GPS L1C/A,L1C,L2C,L2E,L5
	GLONASS L1C/A,L1P,L2C/A,L2P,L3
	SBAS L1C/A,L5 (just for the satellites supporting L5)
	Galileo GIOVE-A,GIOVE-B,E1,E5A,E5B
GNSS features	Positioning output rate: 1Hz~50Hz
	Initialization time: <10s
	Initialization reliability: >99.99%
Positioning precision	
Code differential GNSS positioning	Horizontal: ±0.25m+1ppm      Vertical: ±0.50m+1ppm
	SBAS positioning accuracy:typically<5m 3DRMS
Static GNSS surveying	Horizontal: ±2.5mm+0.5ppm      Vertical: ±5mm+0.5ppm
Real-time kinematic surveying	Horizontal: ±8mm+1ppm      Vertical: ±15mm+1ppm
Network RTK	Horizontal: ±8mm+0.5ppm      Vertical: ±15mm+0.5ppm
RTK initialization time	2~8s
User interaction	
Operating Time	Linux
Buttons	Double Button Operation
Indicators	Five Indicator Lights
Web UI	Freely to configure and monitor the receiver by accessing to the web server via Wi-Fi or USB
Voice guide	iVoice intelligent voice technology provides status and voice guide
	Supporting Chinese, English, Korean, Russian, Portuguese, Spanish, Turkish and user define
Secondary development	Providing secondary development kit
Hardware performance	
Dimension(WxH)	143mmX130mm
Weight	1.43kg (2 Batteries included)
Material	Magnesium aluminum alloy shell
Operating	-45°C~+60°C
Storag	-55°C~+85°C
Humidity	100% Non-condensing
Waterproof/Dustproof	IP67 standard, protected from short time immersion to depth of 1m
	IP67 standard, fully protected against blowing dust
Shock and vibration	Withstand 2 meters pole drop onto the cement ground naturally
Power Supply	9-25V DC, overvoltage protection
Battery	Rechargeable, Lithium-ion battery, 7.4V, Dual hot-swappable batteries
Battery life	Dual batteries:>14h (static mode), >10h (internal UHF base mode), >12h (rover mode)
Communications	
I/O port	5PIN LEMO external power port+RS232, 7PIN external USB(OTG)+Ethernet
	1 radio antenna interface, SIM card slot
Wireless modem	Built-in radio, 1W/2W/3W switchable, typically work range can be 8km
	Barrier-Free" Measurement Technology: Repeater/ Router/ CSD mode
Frequency Range	410-470MHz
Communication Protocol	TrimTalk450s, TrimMark3, SOUTH (KOLIDA)
Cellular Mobile Network	WCDMA/CDMA2000/TDD-LTE/FDD-LTE 4G network modem, downward compatible with 3G GPRS/EDGE
Double Module Bluetooth	BLEBluetooth 4.0 standard, support for android, ios cellphone connection
	Bluetooth 2.1+EDR standard
NFC Communication	Realizing close range (shorter than 10cm) automatic pair between receiver and controller
	(controller equipped NFC wireless communication module needed)
External Devices	Optional external GPRS/EDGE dual-mode communication module, switchable;
	allow to connect external WLAN card
WIFI	
Standard	802.11 b/g standard
WIFI Hotspot	The WIFI hotspot allows smart mobile terminal to connect and access to the internal webserver to control and monitor receiver
WIFI data link	To work as the datalink that receiver is able to broadcast and receive differential data via WIFI
Data storage/ Transmission	
Data Storage	8GB SSD internal storage
	Support external USB storage (up to 32 GB) and automatical cycle storage
	Changeable record interval, up to 50Hz raw data collection
Data Transmission	USB data transmission, supporting FTP/HTTP data download
Data Format	Differential data format: CMR+, CMRx, RTCM 2.1, RTCM 2.3, RTCM 3.0, RTCM 3.1, RTCM 3.2
	GPS output data format: NMEA 0183, PJK plane coordinates, Binary code, Trimble GSOF
	Network model support: VRS, FKP, MAC, fully support NTRIP protocol
Inertial sensing system	
Tilt survey	Built-in tilt compensator, correcting coordinates automatically according to the tilt direction and angle of the centering rod
Electronic bubble	Controller software display electronic bubble, checking leveling status of the centering rod real time
Thermometer	Built-in thermomter sensors, adopting intelligent temperature control technology which can mornitor and adjust the temperature of receiver in real time



**GUANGDONG KOLIDA INSTRUMENT CO., LTD.**  
Add: 7/F, South Geo-information Industrial Park, No.39 Si Cheng Road, Tian He IBD, Guangzhou 510663,China  
Tel: +86-20- 22139033      Fax: +86-20- 22139032  
Email: export@kolidainstrument.com      http://kolidainstrument.com

SUPER RTK

K5 Plus+

When other receivers

Lost **SIGNAL,**

It is still on

the **JOB!**



# SUPER RTK K5 Plus<sup>+</sup>

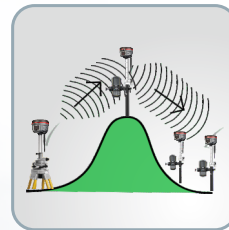
## The best signal acquisition ability

SUPER RTK is far ahead of ordinary GNSS receivers.

Its mission area could be much bigger than others.  
It works where other receivers lose signal. It gives you total freedom: Web UI & SMS control, smart Apps, OTG field download. Even, it can transform into Continuously Operating Reference Station.

Exceed the limitation,  
Release your potential,  
SUPER RTK.

### Key Features



#### - Barrier-Free Measurement

In difficult environment you may lost connection with base station or VRS network. Don't be disappointed, you can choose from 3 creative work modes to continue surveying without interruption. (Repeater/ Router)



#### - Long Range Radio Link

SDL400 built-in radio can send signal as far as 7 km in urban area, 8 km in suburban. The maximum coverage is up to 200 sq.km, suitable to have multiple rovers work simultaneously.



#### - Anti-interference

SDL400 built-in radio features anti-interference capability, so K5plus+ can work close to power plant, transformer substation, mobile signal tower and other interference source.



#### - The Best in Town

To improve the performance in city survey, R&D team upgraded the network module from 3G to 4G. Under 4G mobile network, data transmission is faster and more stable. SUPER RTK is still compatible with 3G and 2G.

### Other Features

Multi-Constellation	8KM Radio Range	410-470 Radio Frequency
SMS Remote Control	Tilt Survey	Electronic Bubble
Linux OS	WIFI	WEB UI
8G SSD Storage	OTG	Bluetooth 4.0
Dual hot-swappable batteries	Mobile Internet Reference Station	

### • Data Collectors Selectable



#### K720

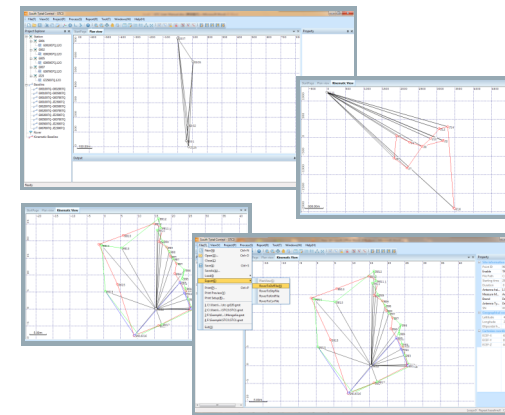
- Windows Mobile 6.5
- 1Ghz CPU, RAM 256MB
- 512 MB Nand, Extension to 32GB
- 3.7V, 5400mAh removable Li-ion
- 3.7 Inch 480X640VGA
- 5 megapixel camera
- WCDMA
- GPS\BDS
- Include EGSTAR3.0



#### H3PLUS

- Android 6.0
- Quad-core 1.3GHz CPU, 2GB RAM
- 4.3 Inches, WVGA 800X480dpi
- 8 megapixel camera with auto focus
- 6500mAh, up to 10Hours
- Dual SIM Card
- 4G FDD TDD network, 3G WCDMA
- GPS\GLONASS\SBAS\A-GPS
- Include EGSTAR\GISTAR\Surv X

### • Post-Processing Software (Free of Charge)



**KOLIDA Total Control**  
integrates static data processing and kinematic adjustment (New program)

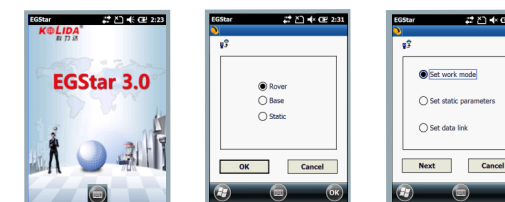
- Antenna manager with popular receiver types.
- Compatible with numerous data format.
- Update online.
- Abundant report exporting.



**KOLIDA GNSS Processor** (Classical program)

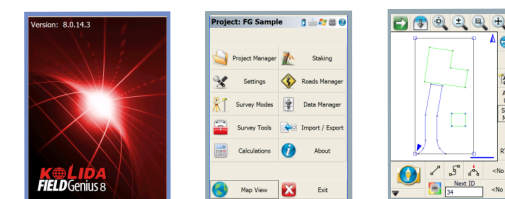
- Fast processing and clear display
- Transformable to RINEX format
- Full options for result Export
- Powerful baseline settings
- Manually edit and filter satellite data for best result

### • Field Software



**KOLIDA Engineering Star** (Free of Charge)

Engineering Star is the most welcomed field software in China. Even a novice can do all complex GNSS survey with EG Star with only six buttons on one screen.



**MicroSurvey FIELDGenius** (Need to purchase individually)

Field Genius is a powerful survey data collection software from Canada. Advanced Roding, Surfacing, Slope Staking, Code Free Linework.



**SurvX** (Free of charge when purchasing with H3PLUS)

SurvX is a field survey software for android devices. It has the basic functions including point survey, point stake out, line stake out, localization, base map display and so on.